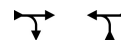


3-PORT SCREWED FEMALE BALL VALVES PN 6 (–15...+120 °C)

XLG 3..



APPLICATION

Designed for zoned, solar, DHW production, chilled water, etc plants.

Features

- Chromed brass body and ball; Teflon and Viton seals.
- Fluid temperature: +5 ... +120 °C (with CRB ..., CVC ... & CVH ...); down to –15 °C (with CVC ... /T & CVH .../T).

Code	DN	Kvs (1) m ³ /h		Suitable actuator			Data Sheet
		direct	by-pass	CRB - CVC	CVC ... bar(2)	CVH 63./21./05.	
	SREWED			bar (2)	bar (2)	bar (2)	
XLG 315	1/2"	16,3	1,5	6	6	6	M 916
XLG 320	3/4"	28,5	2,7	6	6	6	M 916
XLG 325	1"	43	3,9	6	6	6	M 916
XLG 332	1"1/4	89	7,9	6	6	6	M 916
XLG 341	1"1/2	160	14,8	–	6	6	M 916
XLG 351	2"	265	24,5	–	–	6	M 916

(1) : Kvs - Flow coefficient: Flow in m³/h with valve open and pressure drop of 100 kPa.
100 kPa = 10 mWG = 1 bar

(2) : bar - Maximum pressure differential (?p max) permitted by actuator.